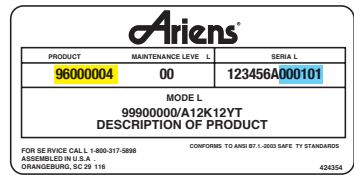




ARIENS®

HOW TO IDENTIFY MODEL AND SERIAL NUMBERS



 MODEL NUMBER

 SERIAL NUMBER

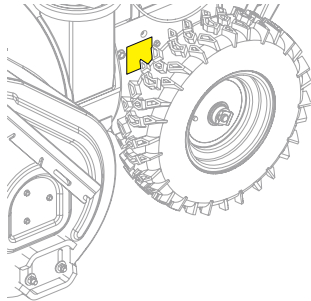
YOUR EQUIPMENT SHOULD CONTAIN A MODEL AND SERIAL NUMBER LABEL SIMILAR TO THE ONE ON THE STYLES BELOW.

MODEL NUMBERS ARE SIX DIGITS IN LENGTH AND BEGIN WITH THE NUMBER "9" (EXCEPT VERY EARLY MODELS).

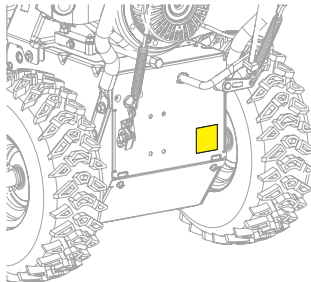
FOR HELP IN LOCATING THE MODEL AND SERIAL NUMBER LABEL, PLEASE REFER TO THE PAGE THAT CLOSEST DESCRIBES YOUR EQUIPMENT.

SNO-THRO SERIAL NUMBER LOCATIONS

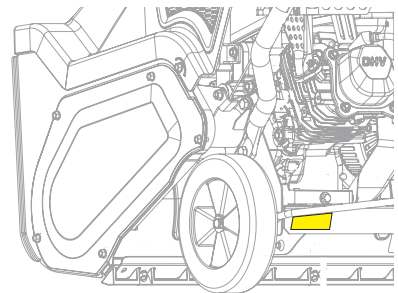
MODEL AND SERIAL NUMBER LABELS FOR THE SNO-THRO PRODUCT LINE ARE LOCATED ON THE REAR OR LEFT SIDE OF THE MAIN FRAME, BELOW THE OPERATORS POSITION



PRO, PLATINUM AND DELUXE



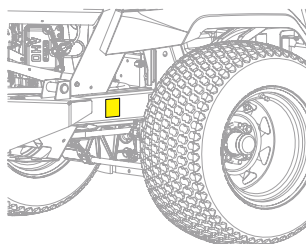
COMPACT AND CLASSIC



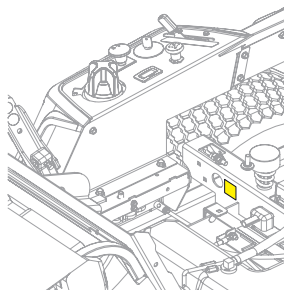
PATH PRO AND PRO 21

ARIENS LAWN & GARDEN SERIAL NUMBER LOCATIONS

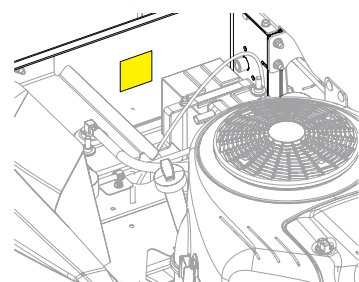
MODEL AND SERIAL NUMBER LABELS FOR THE ZERO-TURN PRODUCT LINE ARE LOCATED ON THE MAIN FRAME OF THE UNIT.



APEX AND ZENITH



IKON XD



EDGE